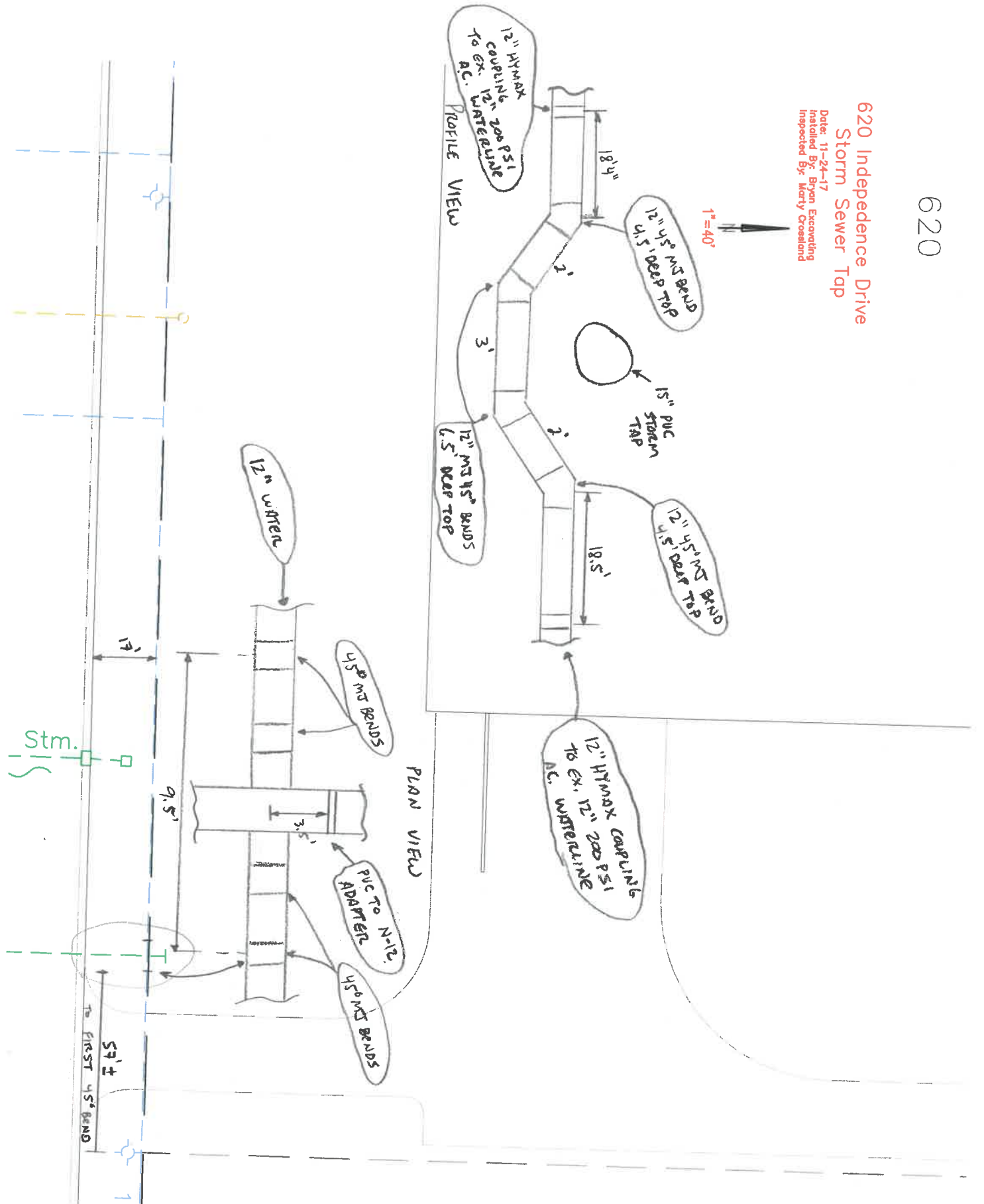


620

620 Independence Drive Storm Sewer Tap

Date: 11-24-17
Installed By: Bryan Excavating
Inspected By: Marty Croasland



NEXT TUE

620 Independence Dr
FF = 681.00 (Base E)

- 1. 11/1
- 2. 11/1
- 3. 8
- 4. 6/6
- 5. 6/6

8" On 12"
Tapping Valve
With M.J. Plug
T.O.P. = 674.5±

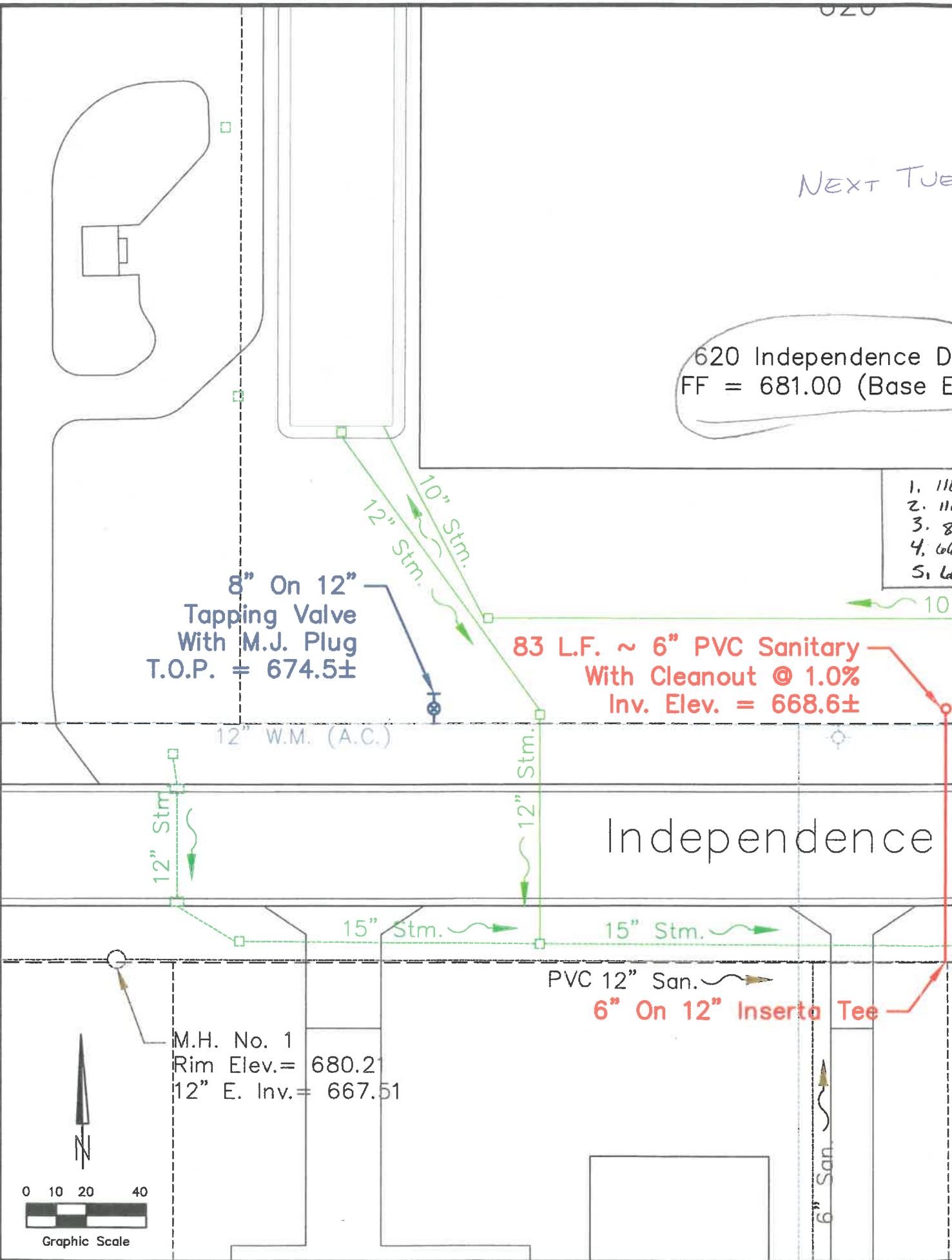
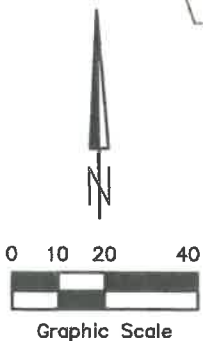
83 L.F. ~ 6" PVC Sanitary
With Cleanout @ 1.0%
Inv. Elev. = 668.6±

12" W.M. (A.C.)

Independence

M.H. No. 1
Rim Elev. = 680.2
12" E. Inv. = 667.51

PVC 12" San.
6" On 12" Insert Tee



8" On 12"
Tapping Valve
With M.J. Plug
T.O.P. = 674.5±

12" W.M. (A.C. Class 200)

12" W.M.

12" Stm.

15" Stm. 8" Stm. (N-12 HDPE)



M.H. No. 1
Rim Elev. = 680.21
12" E. Inv. = 667.51

No. 1
Elev. = 679.01
E. Inv. = 674.41

15" On 18" Tee &
Transition Fitting With
Flexible Couplings And
Stainless Steel Bands



City Of Napoleon
Engineering Department
255 West Riverview Avenue
Napoleon, Ohio 43545
Phone: (419) 592-4010
Fax: (419) 599-8393

City Of Napoleon
620 Independence Dr.
Proposed Service Taps

Created: 12/4/17	Plotted: 5/31/18	Scale: 1"=20'
Drawn: Mark B. Spless	Approved: Chad E. Lulfs	
Drawing Name: Utility Plan.dwg		

No.	Date	Revision	Chgd. By
Plans Prepared By: City Of Napoleon Engineering Department Chad E. Lulfs, P.E., P.S., Director Of Public Works			